

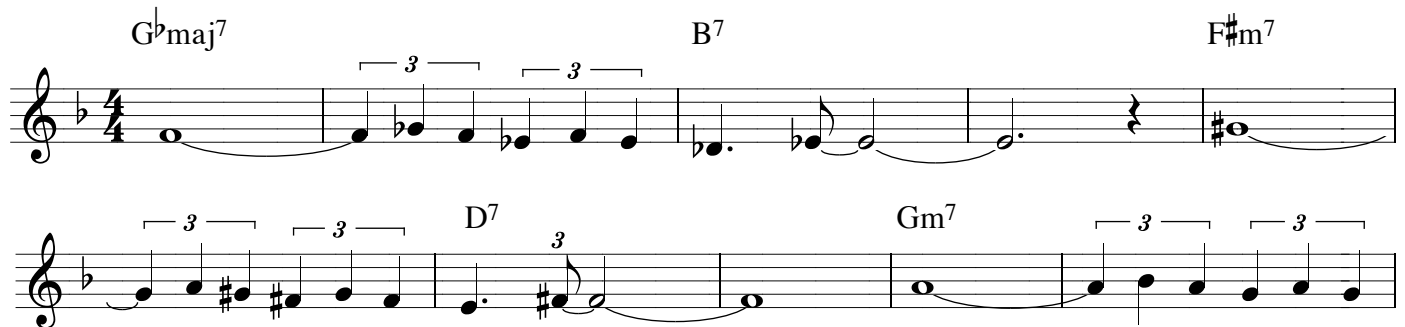
# The Girl From Ipanema

Garota de Ipanema  
Grammy 1965

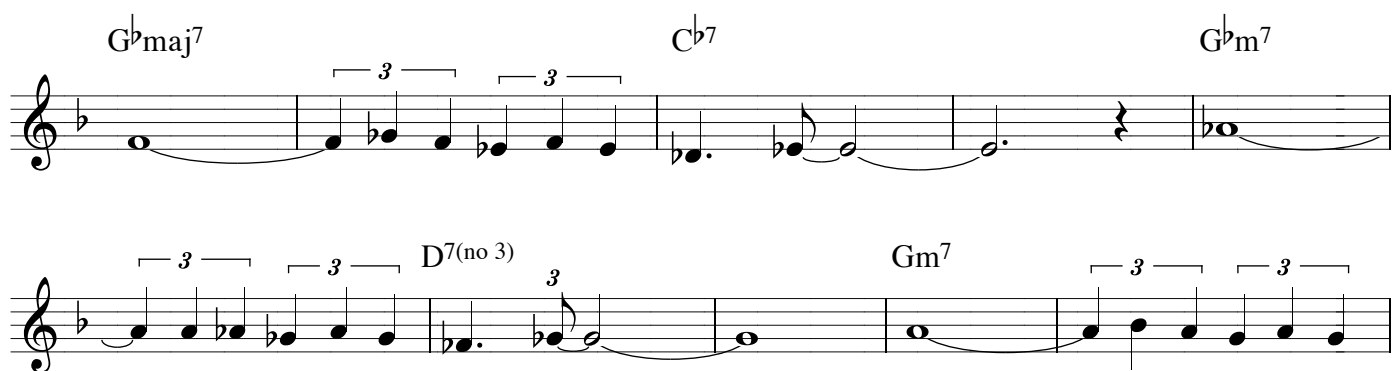
Bossa Nova

Antonio Carlos Jobim, 1962

**Girl from Ipanema** *excerpt*: original notation: moving through the progression: G $\flat$ 7 - B7 - F $\sharp$ m7 is a lot of pedals to move! If you think enharmonically it becomes easier.



**Girl from Ipanema** *excerpt*: enharmonic notation: B7 becomes C $\flat$ 7 and F $\sharp$ m7 becomes G $\flat$ m7, then play the melody notes in the measure with D7 enharmonically. The chord here indicates to omit the 3rd only to remind you that you can't play an F $\sharp$  when you use E $\flat$ . With practice you can learn to do this at sight and soon you won't need to write it out.



Helpful Harp Hint Tuesday post for 11/13/2012 Barbara Ann Fackler <http://hornandharp.com>

This work is licensed under the Creative Commons Attribution-NonCommercial 4.0 International License. To view a copy of this license, visit <http://creativecommons.org/licenses/by-nc/4.0/> or send a letter to Creative Commons, PO Box 1866, Mountain View, CA 94042, USA.