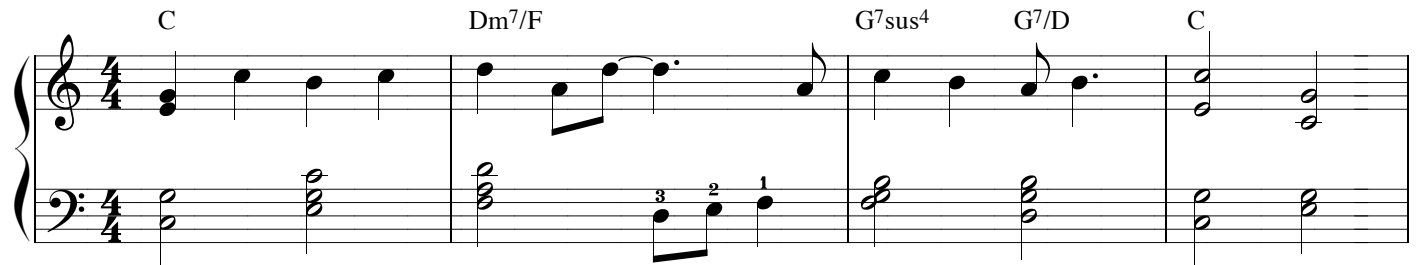


Shifting levers while playing can be a challenge until you know some tricks to help you keep your place. Use this piece as an exercise in letting your RH help your LH find the proper lever at the right time.

Aura Lee

1861 (also known as Love Me Tender)
lever harp: E \flat tuning

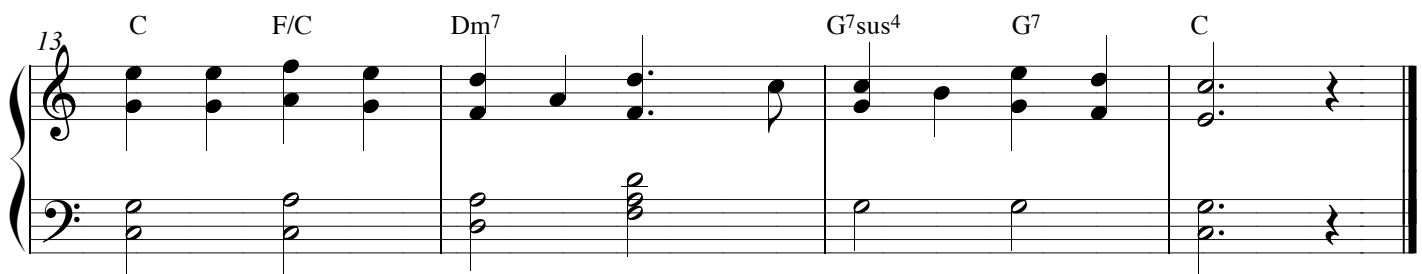
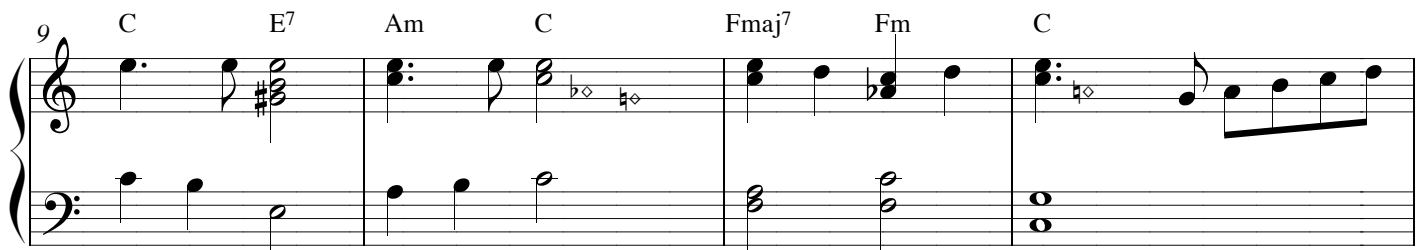
George R. Poulton (music) W.W. Fosdick (words)
arranged by Barbara Ann Fackler



There's plenty of time in m. 8 to shift the G lever to sharp. Use the F string below it to guide your eyes to the right spot and know that it's in between the two strings your RH has just touched on the first beat. It's even easier when you shift the lever in rhythm, so try to move it on beat three. You can simplify your practice by omitting the RH chord on beat three until you're comfortable with the lever shift.



Your RH still helps to guide you to the correct levers in m. 10. Look a little lower than where you've just been playing. Try moving the A and G levers down at the same time. Make the shifts in m. 10 on beat four (or beat four and the "and of four" if you're shifting one at a time). In m. 12, both hands are heading toward the same place, LH to the lever, RH to the string. You can shift a lever while your RH is placed on the string as long as you shift the lever in m. 12 on beat two.



As soon as your hand touches the lever, move your eyes to finding the next string you need to play. Don't linger watching something you don't need to watch. Once you are placed, either on a string or a lever, move on to the next thing you need to do. In most cases, a lever shift is easier to execute and less noticeable to an audience if you make the shift in rhythm.